

Quick Start Guide

KIT MODEL
SNK-D5081
NVR MODEL
SNR-D5401

SAMSUNG

SAMSUNG ALL-IN-ONE SECURITY SYSTEM

Thank you for purchasing the Samsung SNK-D5081 NVR Security System.

Follow the simple steps in this guide to set up and start using your new system.



If you have any questions or need help installing your new product, please contact our free technical support.

Telephone: 1-877-349-3149

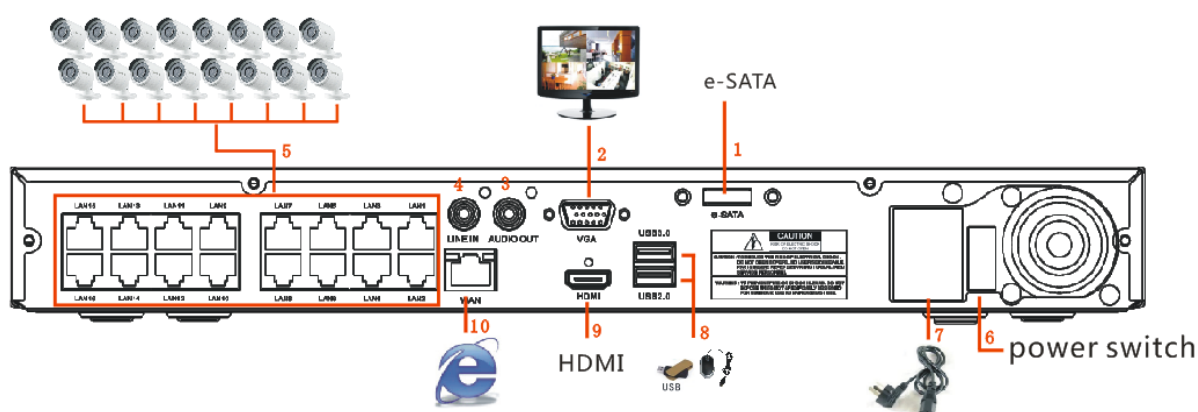
9am - 9pm EST, Monday - Friday

Internet: <http://www.samsungsv.com>

Front



Back



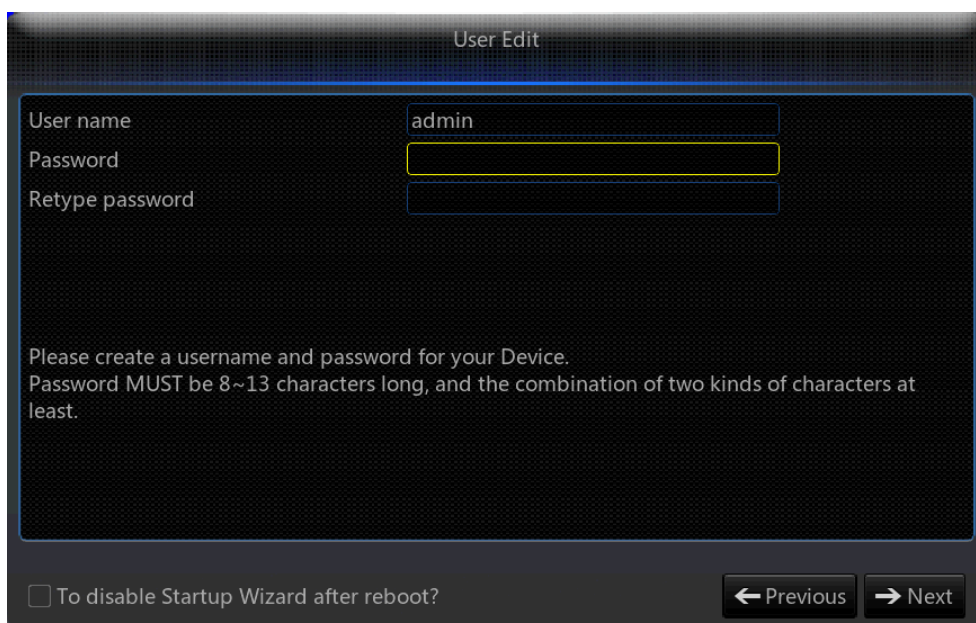
#	Part Name	Function
1	e-SATA	Connect to e-SATA HDD
2	VGA Output	Connect to VGA monitor
3	AUDIO OUT	No Function
4	LINE IN	No Function
5	LAN Port	LAN Port for POE Power supply
6	Power Switch	On/Off
7	Power Supply	Connect to power cable
8	USB	USB port for upgrade or backup
9	HDMI Port	Connect to HDMI monitor
10	WAN Port	WAN port for internet

1 Startup Wizard

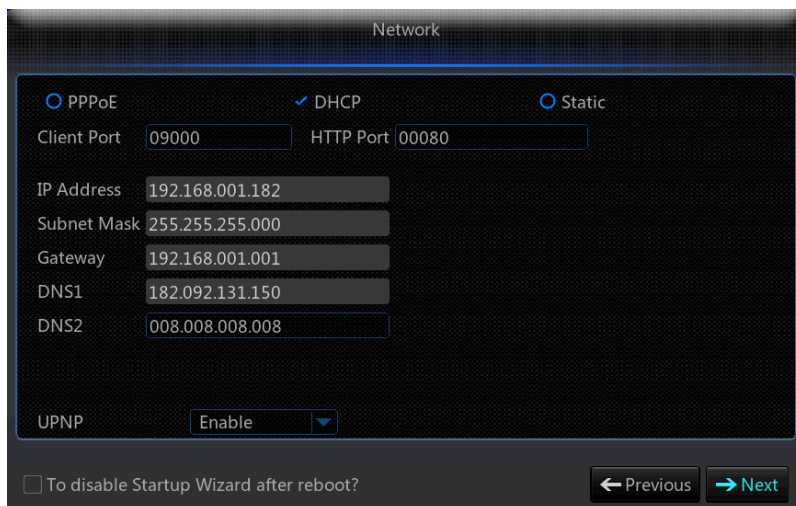
After the NVR Startup is completed, the Startup wizard will be displayed. If you do not want to make any additional changes to your settings when it reboots, check “To disable Startup Wizard after reboot”.

Wizard setting menu includes: Homepage, Network setup, IPC setup, Record Schedule and hard disk maintenance.

1. Homepage. Set admin password. Please create a user name and password for your Device. Password MUST be 8-13 characters long, and the combination of two kinds of characters at least (ex. Letter, number and special character). After restart, use the user name and password set above to log in.

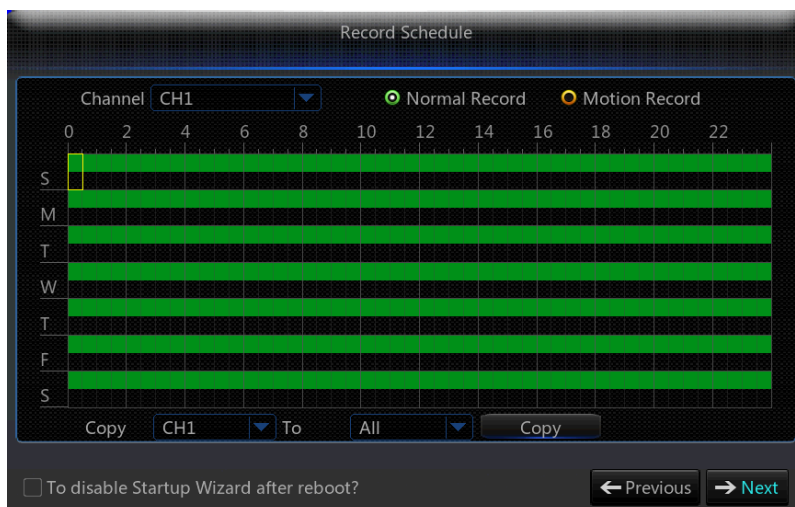
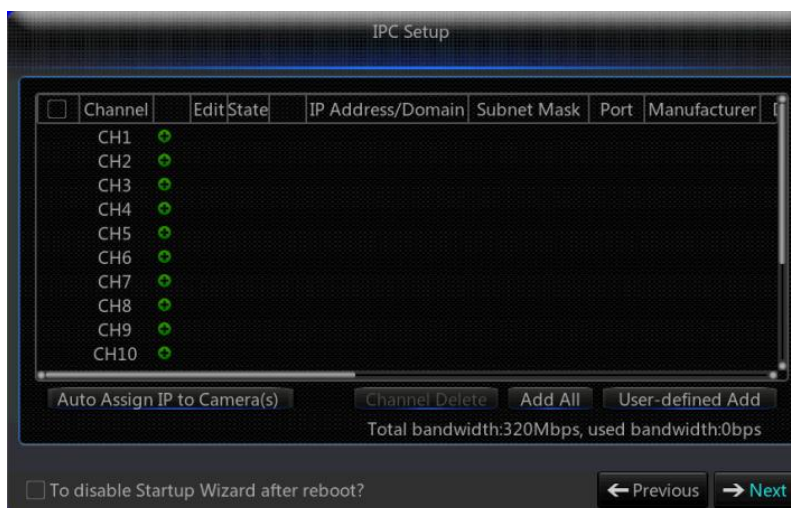


2. Network setup: In network setup page, user may set the network of the NVR.



3. IPC Setup: User may add and delete IPC.

Record Schedule: User may set recording time and scheduled recording of NVR.



1.1 Popup Menu

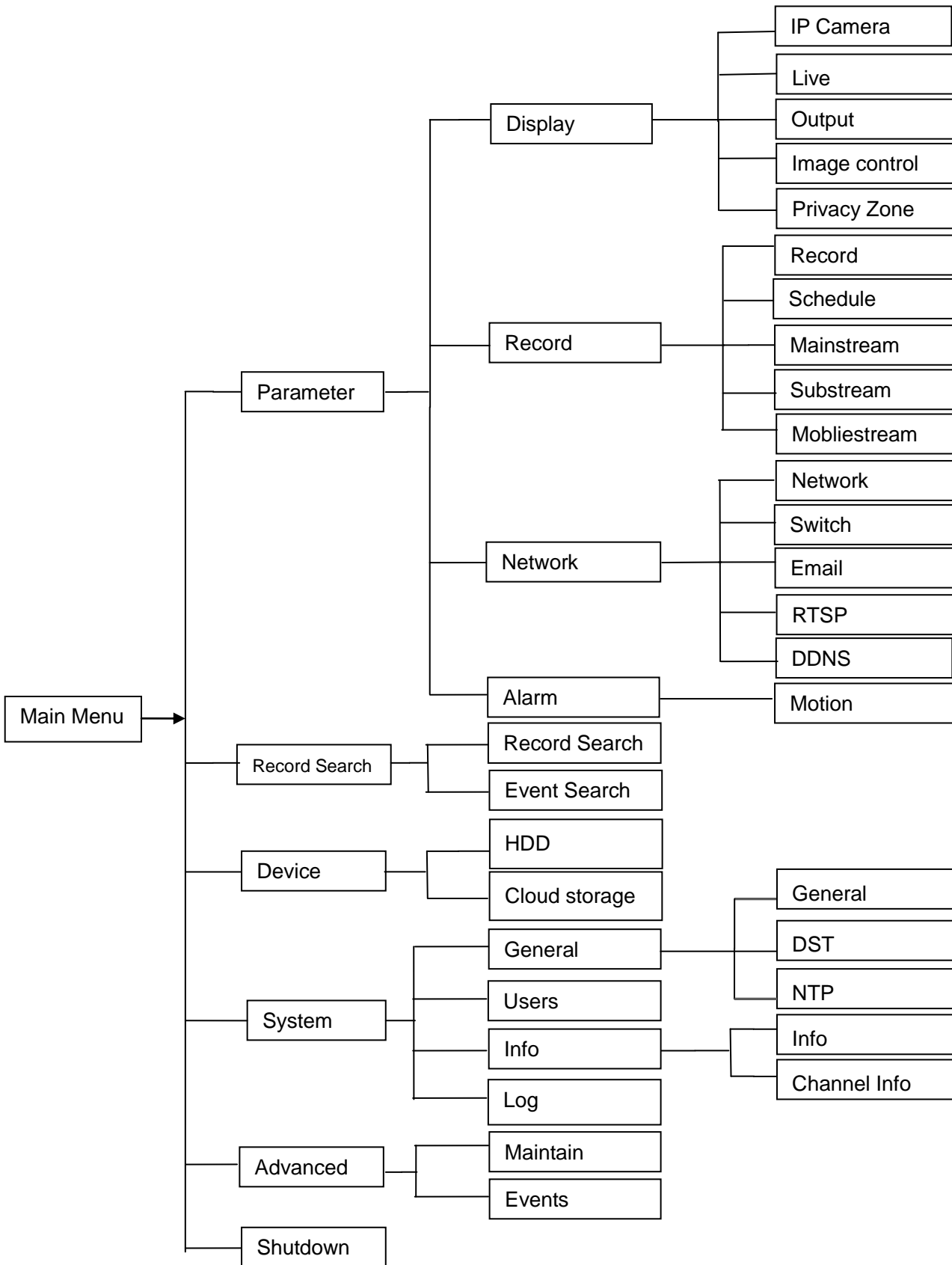
After completing the system initialization, right click on your mouse on the preview interface or slide the mouse to the bottom of screen to open the Pop-up Menu. Here, you could set parameter settings and switch between Main Menu, Multi-Pics, Record Search, Sequence and Streams.

The options in the pop-up menu may vary according to different parameter settings. The options in the menu will be explained in detail in the following chapters.

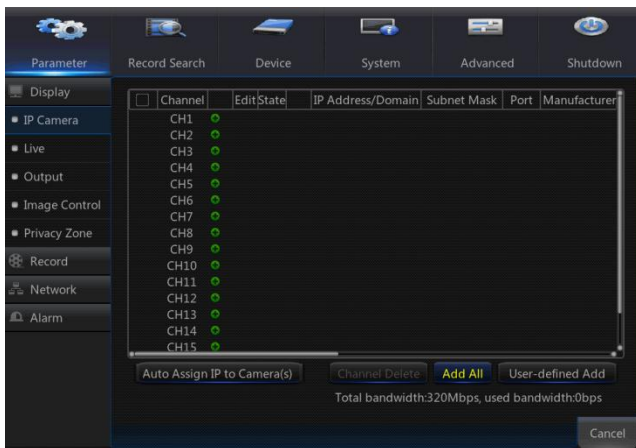


Component Name		Function
1	Main Menu	Access the main menu
2	Manually Lock Screen	Sign out or access sign-in page
3-5	Four-Channel Layout/Nine-Channel Layout/Sixteen-Channel Layout	Display four channels of video/ Display nine channels of video/ Display sixteen channels of video
6	More Layout	Display more channels of video
7	Stream Switch	Switch between Main Stream and Sub Stream
8	View Image Quality	Switch among Realtime, Balanced and Smooth
9	SEQ	Start or stop SEQ
10	Playback	Replay video recorded
11	Record	Enable or disable manual recording
12	Instant Playback	Display channel name Quick playback of video of last 5 minutes
13	Zoom	Hold and drag mouse cursor to select a frame of current video to zoom in
14	Color	Adjust the color of video


1.2 Main Menu Guide



1.3 Main Menu




To enter the main menu screen, left click on the mouse on LIVE mode or press the [Menu] button on remote controller. You can also click

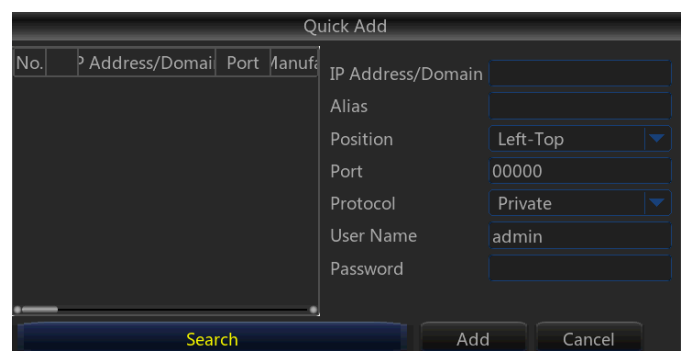
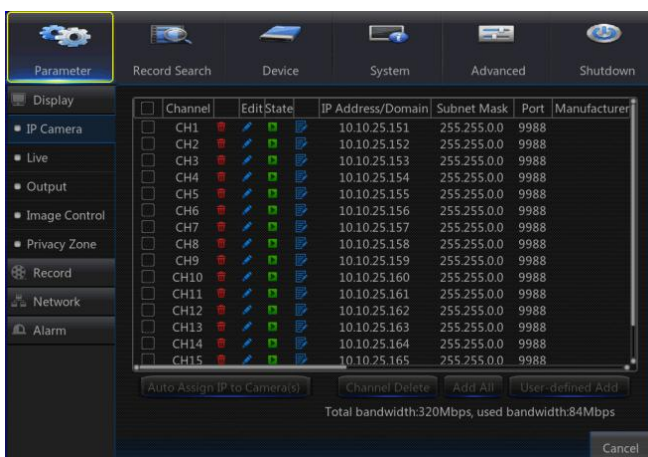
 icon on the toolbar to enter the main menu screen as shown in Picture on the left.

Menu will be locked if left idle and you will have to enter the password again.

In Main Menu mode, you can change settings for Parameter, Record Search, Device, System, Advanced and Shutdown.

Go to “Main Menu”→“Display”→“IP Camera”.

- **Channel:** IPC camera channel.
- **Edit:** Modify the name of IPC and location of channel name, change to other IPC or protocols, etc.
- **State:** Status of IPC, on-line or off line
- : Modify IP address of IPC.
- **IP Address/Domain:** IP address of the IPC connected.
- **Subnet Mask:** Subnet mask of IPC.
- **Port:** Client port of IPC.
- **Manufacturer:** Manufacturer of IPC.
- **Device type:** Device Type of IPC.
- **Protocol:** Access protocol for IPC connected to NVR.
- **MAC Address:** MAC address of IPC.
- **Software Version:** Current firmware version of IPC.
- **Auto Assign IP to Camera(s):** Auto Assign IP to IPC.
- **Channel Delete:** Select one channel and click Channel Delete to delete IPC.
- **Add All:** Add All IPC.
- **User-defined Add:** To add the IP cameras as user defined.



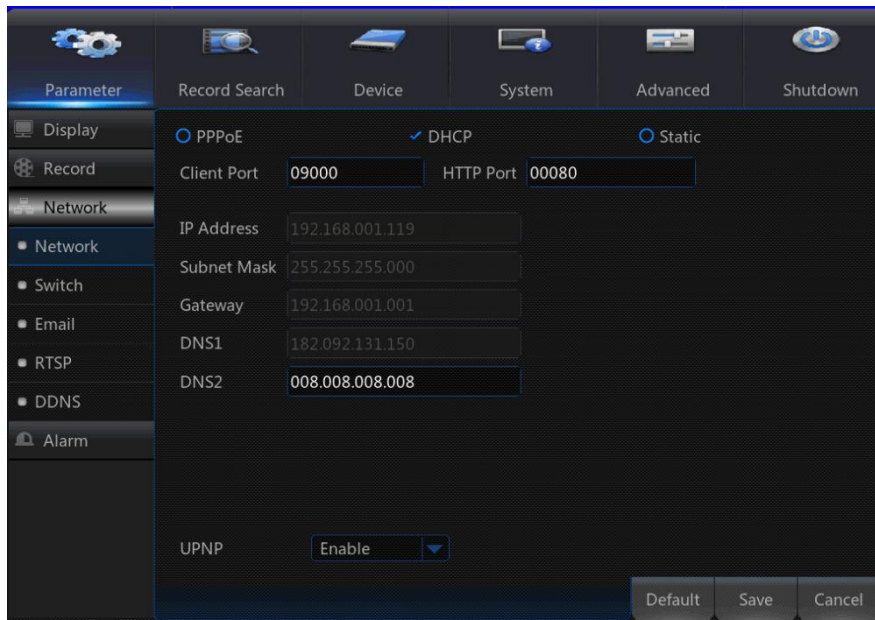
1.4 Network

Go to “Main Menu”→ “Parameter”→ “Network” to enter into the interface.

Select the type of network connection (PPPoE, DHCP, Static) and set Port, then user may remotely control the monitoring, recording, playback or backup of the NVR through the network.

Take DHCP as an example. In this mode, the router automatically assigns IP address for the NVR. After restarting the NVR or DHCP server, the IP address obtained by the NVR may be different. As a result, user should check the IP address and port number for each remote access of the NVR. The operation procedure is as follows:

1. Select DHCP, click Save and refresh the NVR. Input Client Port and HTTP Port (the two values must not be the same).
2. Set obtained IP address of the NVR and the mapping port.
3. Remotely visit the NVR by IP address:
http://Public network IP: HTTP port number (such as 00080)
http:// Intranet IP: HTTP port number (such as 00080) (Only available in the same LAN)



For PPPoE, Static and DHCP, after setting IP address of NVR, the extranet port shall be mapped on the router before visiting NVR through public network.

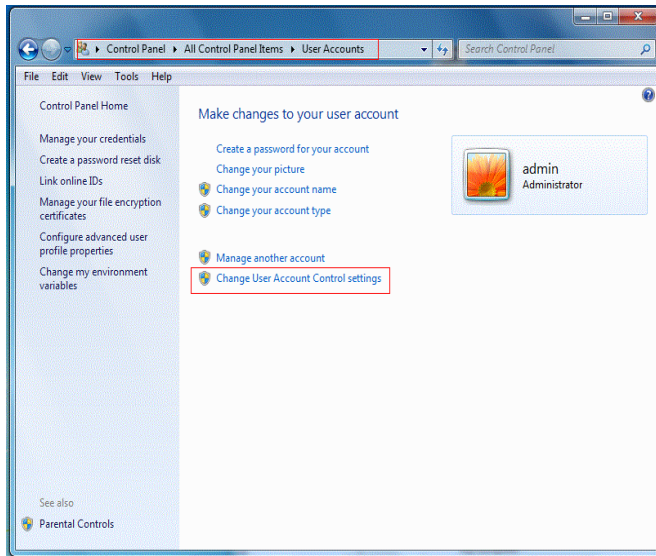
Note: Save after setting to make effective. If there are multiple NVR in a LAN, make sure their MAC addresses are different.

2 Web Application Manager

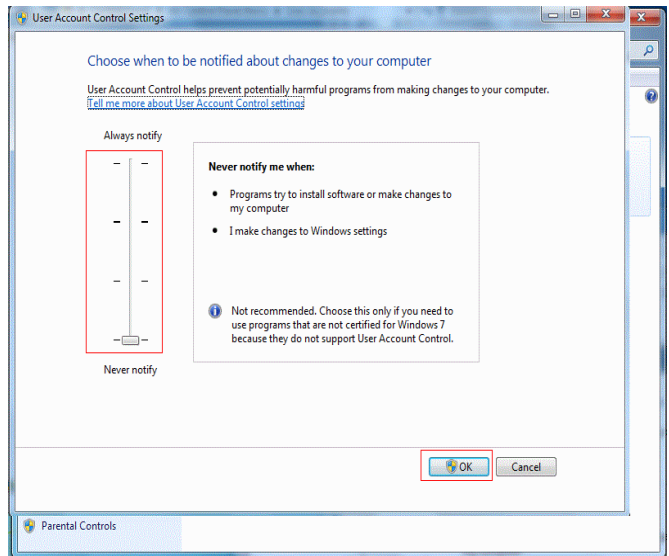
2.1 Download and Installation of Plugin

Windows 7: You may need to setup the user authority for the remote control or you may not be able to back-up your hard drive or record.

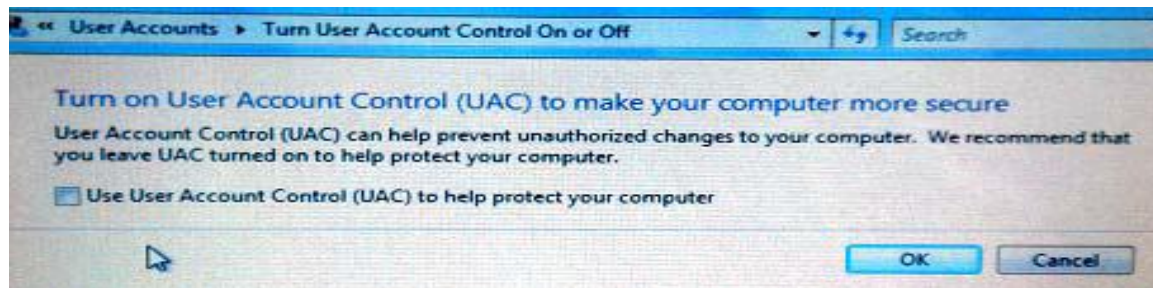
Windows Vista: Start→ Setup→ Control Panel. Set user authority in control panel shown on the picture below. Remove the check “√” in front of the option “Use UAC to help protect your computer” and click OK to confirm.



WIN7-1

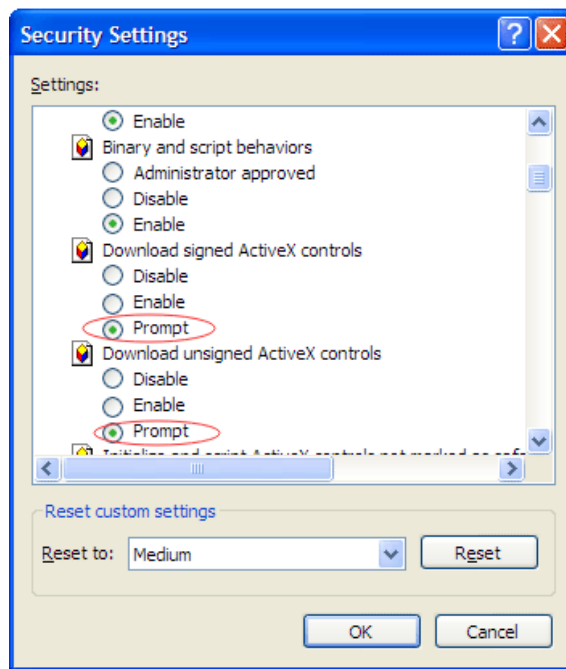


WIN7-2



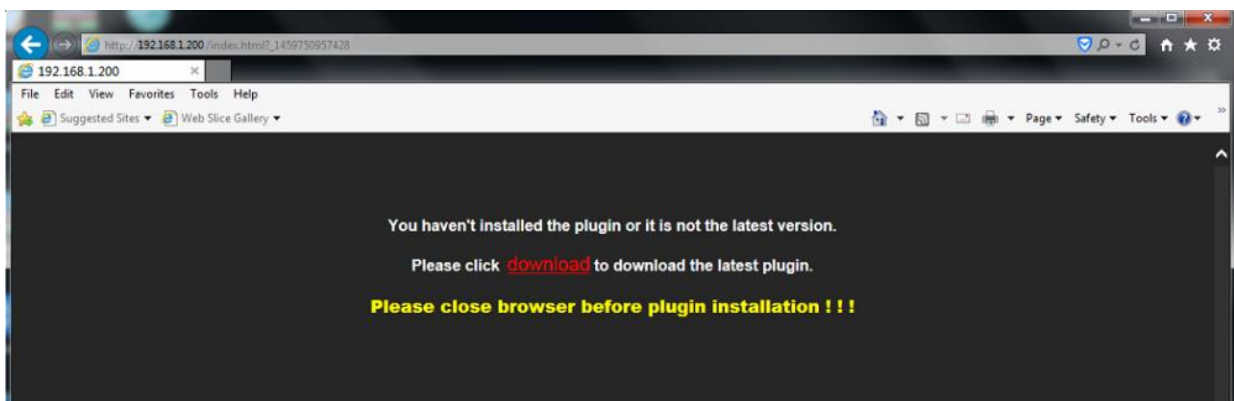
Vista

Note: If the web plugin is not downloaded successfully, please check if your browser's safety level or firewall setting is too high. Please open IE browser→ [Menu Bar] Tools→ Internet options→ Security → Internet →Custom level→ Enable the following options.

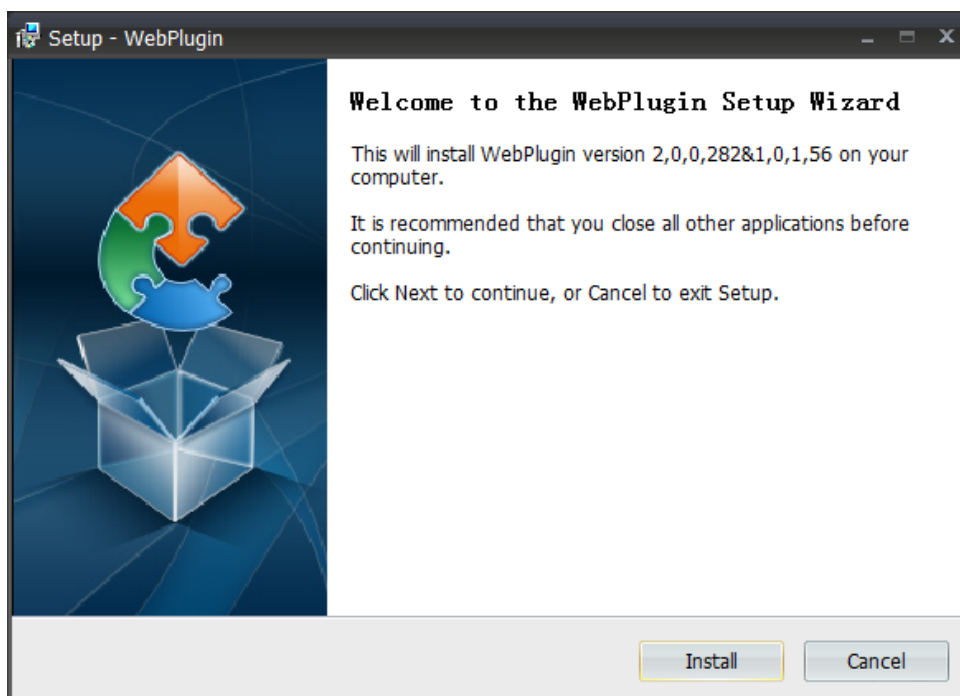


Download and Installation of plug in for IE

Run your web browser as administrator and input the IP address and HTTP port of NVR, such as: <http://192.168.1.200:80> .



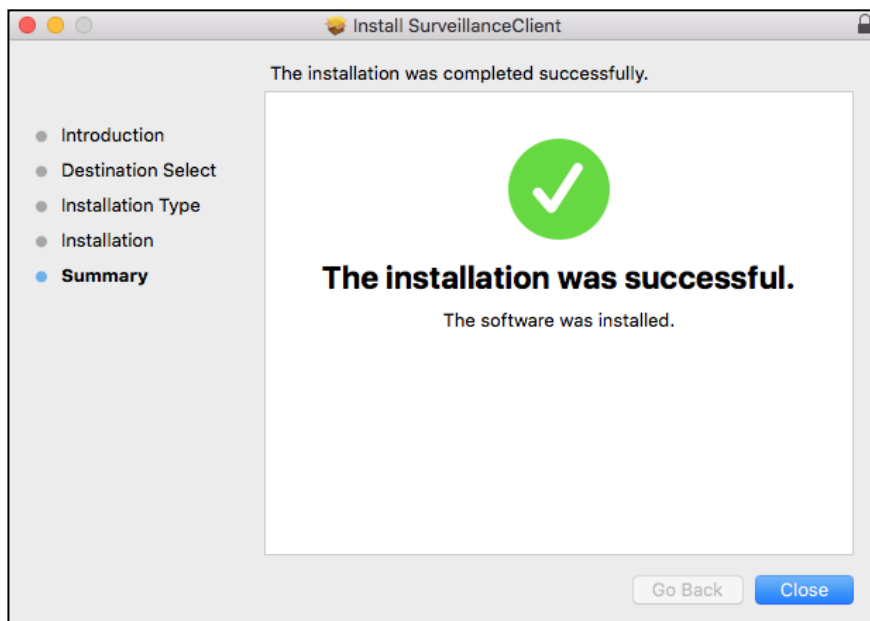
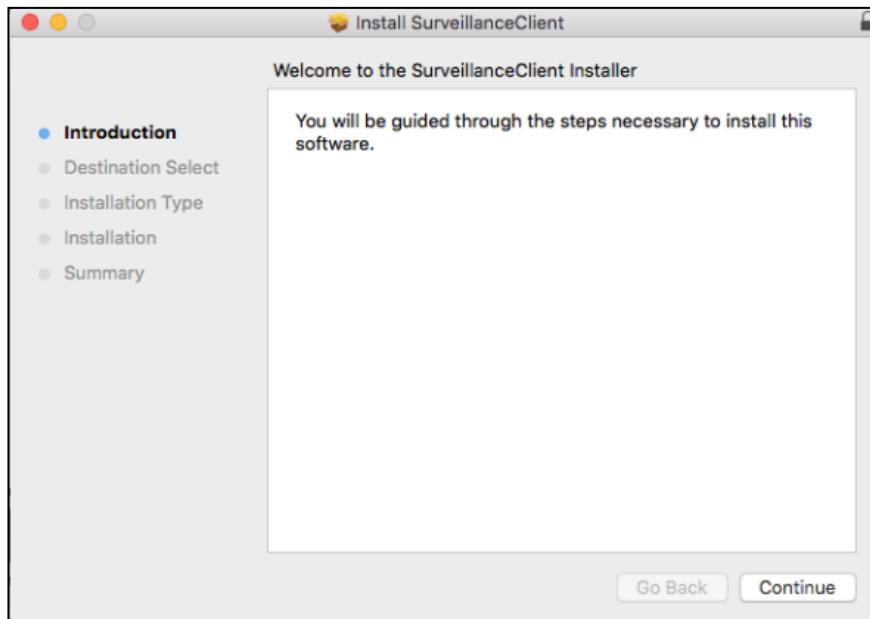
Save plug in, and then click Install on pop-up box of the Setup-Webplugin to install. Restart the browser, and then enter the NVR IP address plus HTTP port, such as <http://192.168.1.200:80>, to log in.



Download and Installation of plug in for Safari

Input the IP address and HTTP port on Safari, such as <http://192.168.1.200:80>, and then click download to download the plug in. Click Download icon to have the plug-in 'SurveillanceClient.dmg' downloaded. Double click 'SurveillanceClient.dmg'. Double click 'SurveillanceClient.pkg' and then click Continue and Install. Enter user name and password to install, then click Close to finish installation. Restart the browser, and then enter the NVR IP address plus HTTP port, such as <http://192.168.1.200:80>, to log in.





Note: The above instructions are for first time installations. You can use the same plug-in for IE and Google Chrome. If plug-in for windows OS was installed on IE or Google Chrome once, you need to use IE which needs to be run as administrator. Use Google Chrome to log in to NVR.

If you use Google Chrome to log in, please use Version 41 or lower. If you use V42 to V44 to log in, you need to enable NPAPI plug-ins. You can enter `chrome://flags/#enable-npapi` on URL bar of Google Chrome to find and enable NPAPI. Please note that it doesn't support V45 or above.

When you do a firmware upgrade, you have to re-download and re-install the plug-in. Based on different situations, it may not be able to install the plug-in through browsers. In this case, please copy and install the plug in on the CD attached (Web_plugin_Windows_YYYY_MM_DD.exe for Windows system, and SurveillanceClient_Mac_YYYY_MM_DD.dmg for Mac).

2.2 View NVR Remotely Through Browsers

After the plug-in is installed and the IP address and HTTP port is entered, you can go to the following log in interface. Enter the username and password you created on the local NVR, then select Sub Stream or Mobile Stream (In general, select Sub stream for intranet and Mobile stream for extranet), and select language. Click 'Open All Channels Preview' to open all live pictures. Press Login to visit NVR remotely.

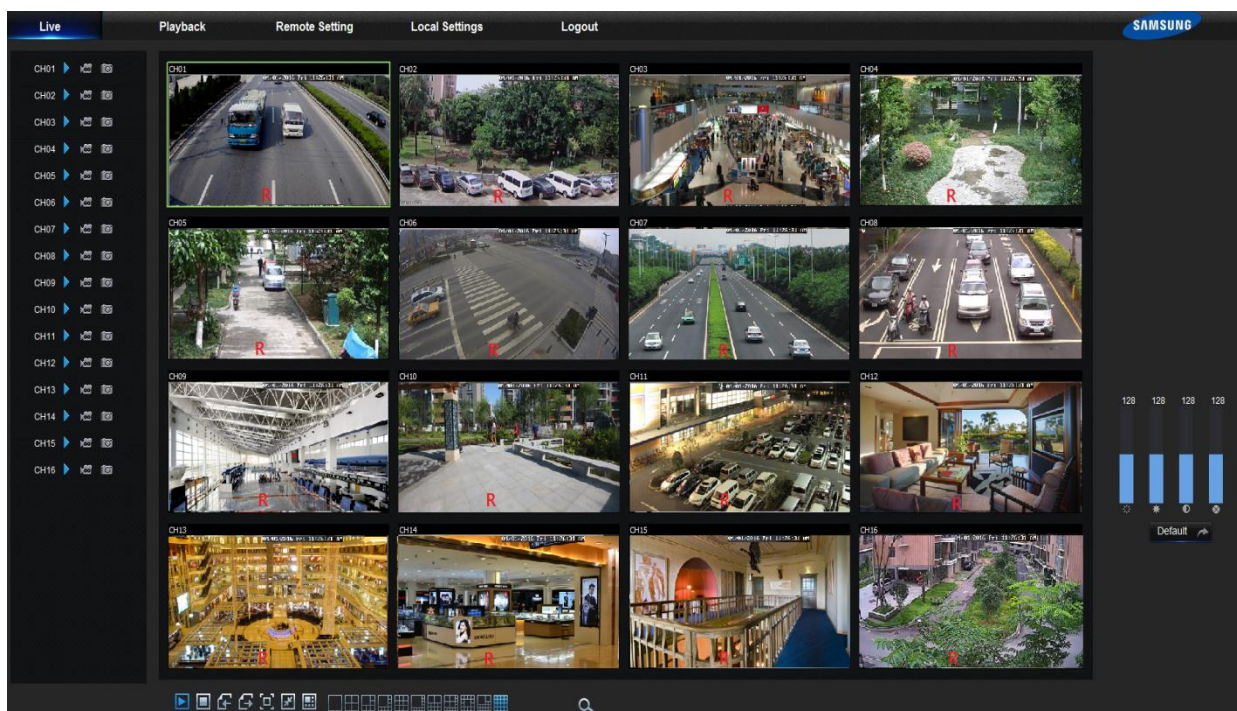


The image shows a 'User login' web interface. It contains the following fields and options:

- Username:** A text input field containing 'admin'.
- Password:** A text input field with masked characters (dots).
- Client Port:** A text input field containing '9000'.
- Bitrate:** A dropdown menu set to 'Sub stream'.
- Language:** A dropdown menu set to 'English'.
- Remember Pwd:** An unchecked checkbox.
- Open All Channels Preview:** A checked checkbox.
- Login:** A button at the bottom left.
- Reset:** A button at the bottom right.

2.3 Live Interface

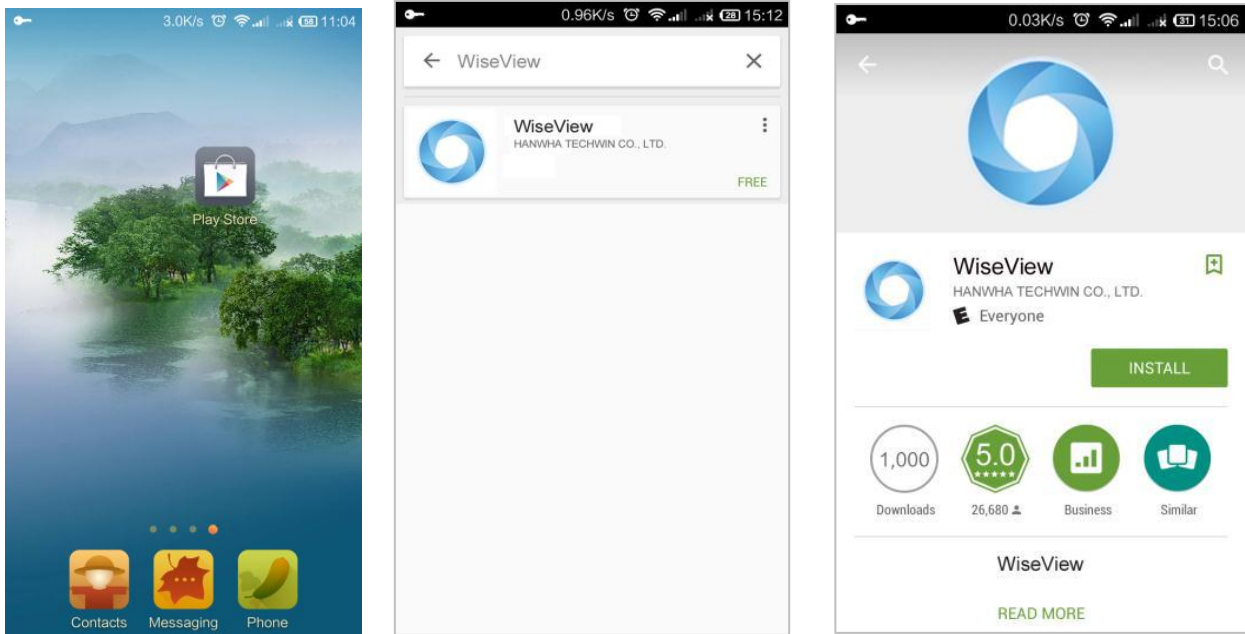
Log in and go to live view.



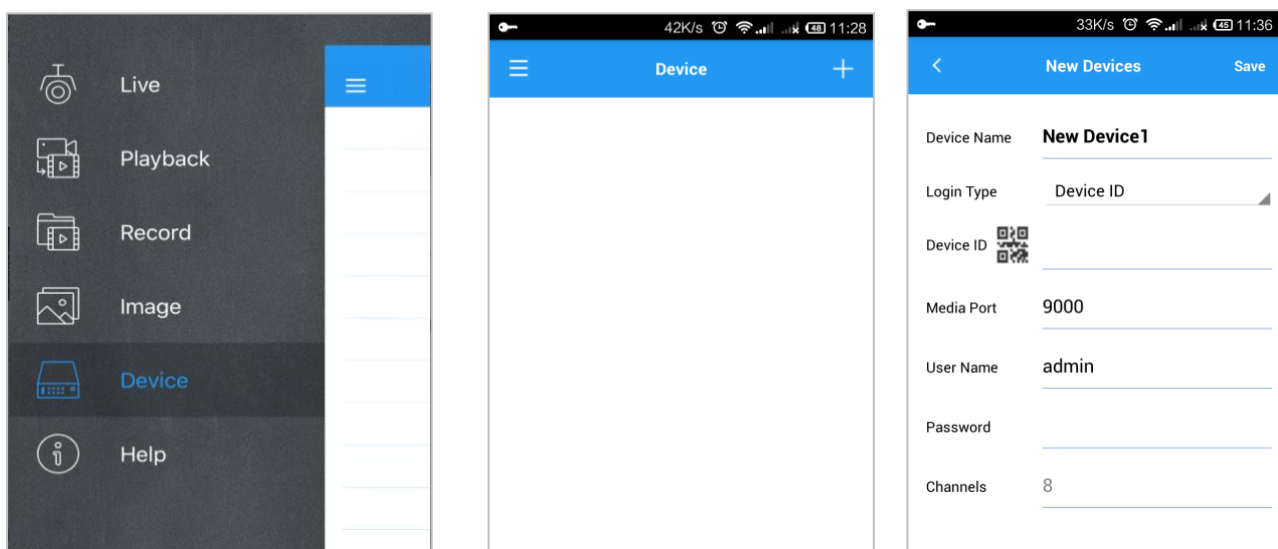
3 Mobile App

Android Phones/Tablets

1. Open Play Store to search WiseView and click 'INSTALL' to install the app.



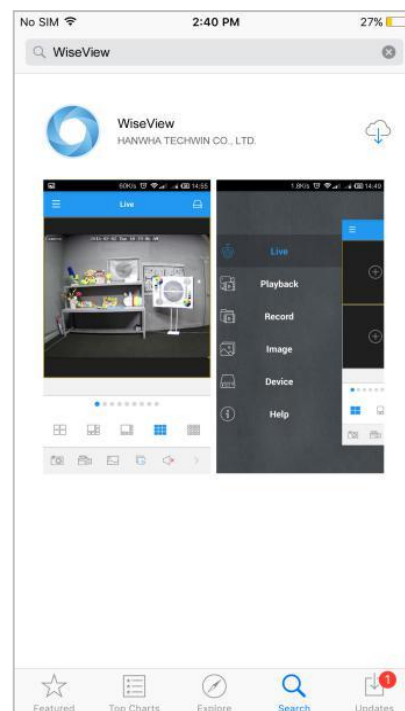
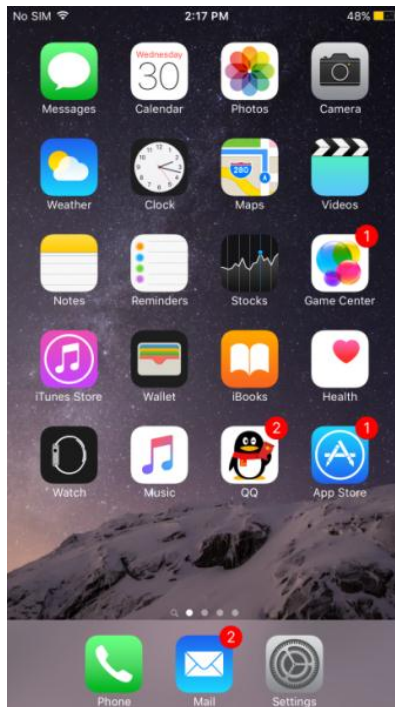
2. After installation, open WiseView and select 'Device'. Then click '+' to add new device. Scan QR code on the Information page of system on the local NVR. Then input client port, username and password, and then click Save to log in the device.



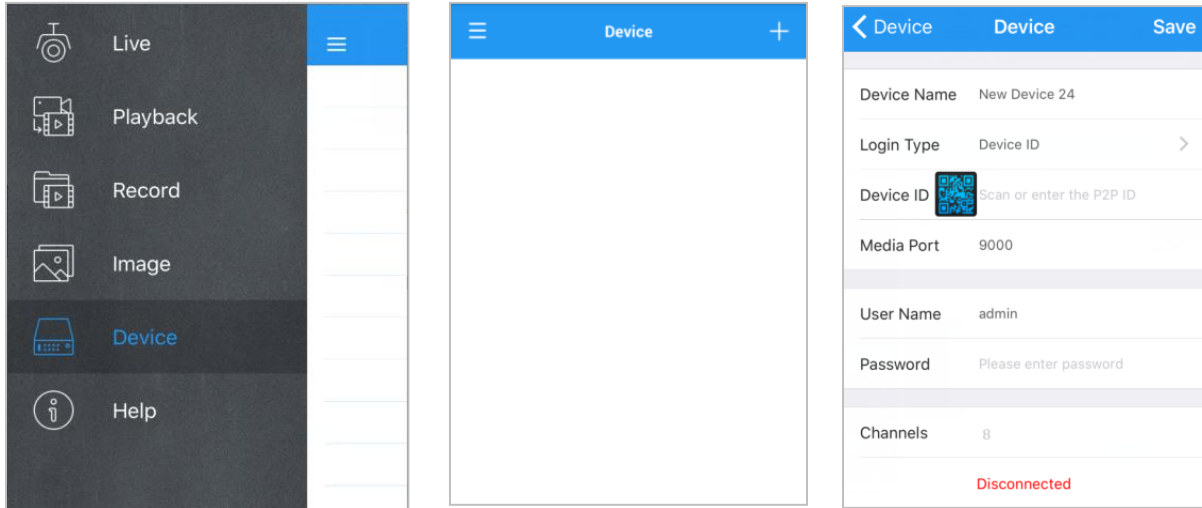


iPhone/iPad

1. Open App Store to search WiseView, and click icon  to install.



2. Open WiseView, and go to Device. Click '+' to add new device. Scan QR code on the Information page of system on the local NVR. Then input client port, username and password, and then click Save to log in the device.



It supports max.1080P resolution during live view on mobile phones. If the image resolution is above 1080P, the video will not be fluent.

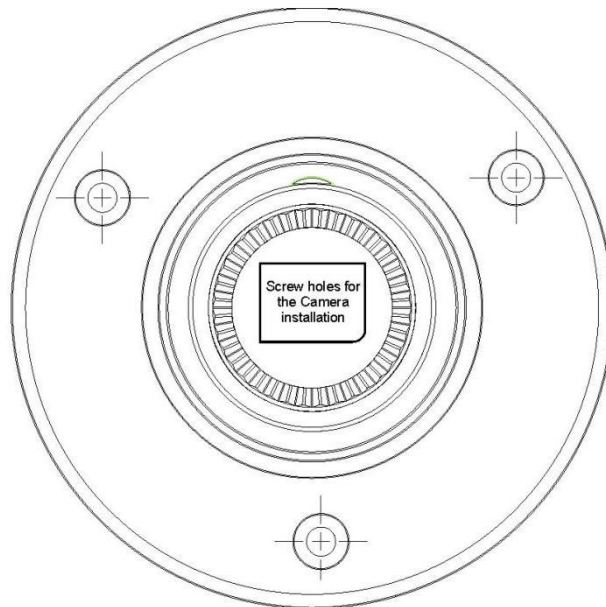
■ MEMO

4 Camera Installation Template

To make the camera installation easier, you can tear off this page and use it as reference.

TEMPLATE

This template is used to install the camera on the wall



CAMERA FRONT



■ MEMO

■ MEMO

